

Human Machine Interface - Inhouse Developed AI Solution will Take care of Safety

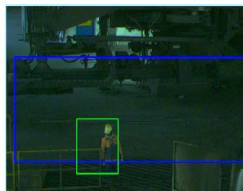
Doc. No. ADPL/Brochure/AI_ML Enabled Sol/001; Rev. No. 00.00; Eff. Date.: 15.02.2025

Background

Manufacturing industries, like steel, cement, and mining, use large mobile machines with multiple access points. Operators rely on CCTV and manual safety measures, but limited visibility and human oversight make boarding, deboarding, or working nearby highly hazardous.

Static machines, like mud guns in blast furnaces, also pose risks if safety measures are neglected.

CCTV Camera and Inhouse AI Based Algorithm - Ultimate Solution Towards System Based Safety



We have developed an in-house vision-based solution that utilizes a deep learning model to accurately detect human presence in specified areas. The system generates alerts, captures frames for analysis, and its output can be interlocked to stop machines if needed (*Picture from deployed project - Human captured near mud gun*).

Key Features and Benefits

- **Advanced AI Detection:** Uses deep learning models to accurately identify human presence in the vicinity of operating machines or in any specified location.
- **Real-Time Alerts:** Sends instant notifications to operators for quick response.
- **Wide-Angle Coverage:** Captures a broad field of view to monitor HUMAN Presence.
- **Adaptive Sensitivity:** Adjusts detection thresholds based on environmental conditions.
- **Records Detection:** Capturing Screenshots for detection analysis.

Proven Success: Advanced solutions deployed at TSL's Coke Plant and Blast Furnaces.

👉 For more information you can contact us through our website or email provided above.